

Excursion



BLUE POND

青い池

One of Biei's newest sights located in the south side of Shirogane Onsen. Sediment control dam was built in 1988, this artificial pond became famous gradually because water surface is bluish. Take bus from Biei Station to Shirogane Aoi-ike Iriguchi.

24 hours / free

SHIROGANE ONSEN

白金温泉

20km south east from Biei, overlooking the Tokachidake Mountains from hot-spring hotels and blue river bridge. Refresh your mind and body.

Yumoto Shirogane Onsen Hotel 11:00 - 17:00 day trip bath / 800 yen

FALLS OF SHIRAHIGE

白ひげの滝

Known as the bluish waterfalls flowing down in front of Blue River Bridge, near Shirogane Onsen Hotel Park Hills.

Information

BICYCLE RENTAL

Biei is the best places for hillside cycling. There are 4 rental shops around Biei Station (common prices and deferred payment), offers free left luggage service.

Terashima Shokai (寺島商会)

Matsuura Shoten (松浦商店)

Takikawa Cycle (滝川サイクル)

Uno Shoten (宇野商店)

BIEI STATION

美瑛駅

Ticket window 6:30 - 18:30, there are lockers (June to Sep) and left luggage (8:00 - 18:00, summer only).

From Asahikawa (30 minutes / hourly), Furano (30 minutes / every 2 hour), Obihiro (2.5 hours / 1 daily).

FURANO & BIEI NOROKKO GO

富良野・美瑛ノロッコ号

This sightseeing train runs between Asahikawa or Biei and Furano, June to September.

Please visit ekinavi-net.jp

Travel information about Hokkaido and Sakhalin. Offering useful guides, easy-to-read maps, free brochures and accommodation booking.



PATCHWORK ROAD IN BIEI

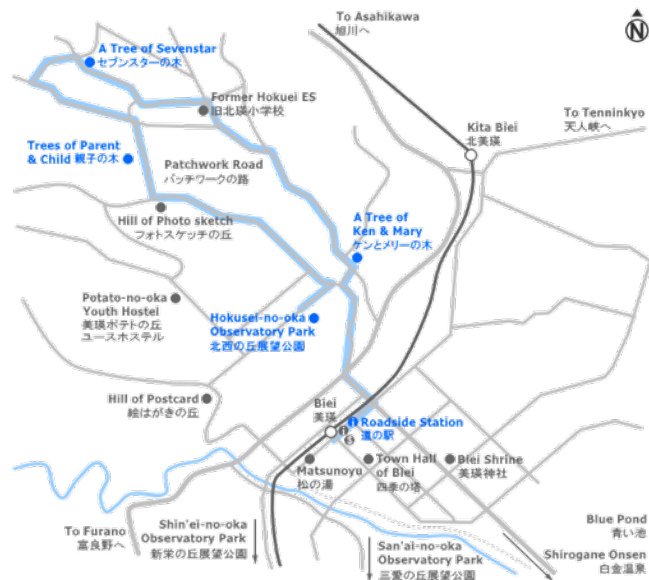
THINGS TO DO & AREA MAP

The smart travel guide

FREE

ekinavi-net.jp

AREA MAP



Sights in Patchwork Road

Distance 14km
Duration 3 hours by bicycle (or 4 hours on foot)



A TREE OF KEN & MARY

ケンとメリーの木

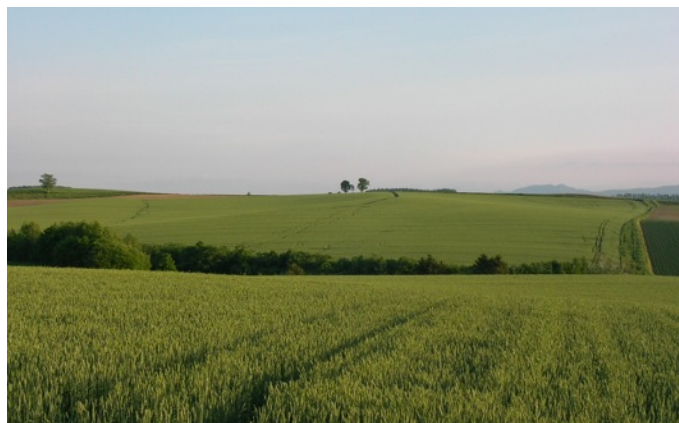
2.5km north east from Biei Station, this tree stands from 1923. Enjoy the nicest rural landscape to A Tree of Sevenstar from here. Turn left at the former Hokuei Elementary School, you can see the Tree of Parent and Child in the distance.



A TREE OF SEVENSTAR

セブンスターの木

Fantastic landscapes, this pretty oak tree was drawn to the cigarette package "Sevenstar" in 1976. 4km west from A Tree of Ken and Mary. Go down to the narrow road on the opposite side of this tree, visit the next destination.



TREES OF PARENT & CHILD

親子の木

2km south east from A Tree of Sevenstar, this private landmark can be viewed from the public road only. Tokachidake Mountains behind the fields.



HOKUSEI-NO-OKA OBSERVATORY PARK

北西の丘展望公園

Patchwork road's last highlight, 3km east from the Trees of Parent and Child. Overlooking the rural landscape and mountains from pyramid observatory.